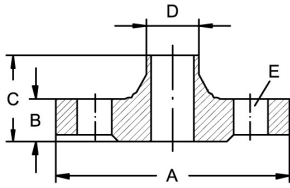


## Welding neck flanges EN 1092-1

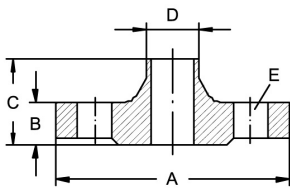
Art.No EUR Art.No EUR

### Welding neck flange EN 1092-1, PN 6



DN	A	B	C	D	E	AISI316L-1.4404	AISI316Ti-1.4571
10	75	12	28	17,2x1,8	4xM10x40	588230	Enquiry 585330
15	80	12	30	21,3x2	4xM10x40	588231	Enquiry 585331
20	90	14	32	26,9x2,3	4xM10x50	588232	Enquiry 585332
25	100	14	35	33,7x2,6	4xM10x50	588233	Enquiry 585333
32	120	14	35	42,4x2,6	4xM12x55	588234	Enquiry 585334
40	130	14	38	48,3x2,6	4xM12x55	588235	Enquiry 585335
50	140	14	38	60,3x2,9	4xM12x55	588236	Enquiry 585336
65	160	14	38	76,1x2,9	4xM12x55	588237	Enquiry 585337
80	190	16	42	88,9x3,2	4xM16x65	588238	Enquiry 585338
100	210	16	45	114,3x3,6	4xM16x65	588239	Enquiry 585339
125	240	18	48	139,7x4	8xM16x65	588241	Enquiry 585341
150	265	18	48	168,3x4,5	8xM16x65	588242	Enquiry 585342
200	320	20	55	219,1x6,3	8xM16x75	588244	Enquiry 585344
250	375	22	60	273x6,3	12xm16x75	588246	Enquiry 585346
300	440	22	62	323,9x7,1	12xM20x80	588248	Enquiry 585348

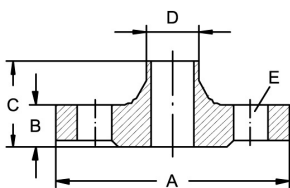
### Welding neck flange EN 1092-1, PN 10



DN	A	B	C	D	E	AISI316L-1.4404	AISI316Ti-1.4571
200	340	24	62	219,1x5,9	8xM20x80	588344	Enquiry 585544
250	395	26	68	273x6,3	12xM20x80	588346	Enquiry 585546
300	445	26	68	323,9x7,1	12xM20x80	588348	Enquiry 585548
350	505	26	68	355,6x7,1	16xM20x80		585501
400	565	26	72	406,4x7,1	16xM24x90		585502
500	670	28	75	508x7,1	20xM24x90		585503

10 - 40 Use flanges ND 40. 50 - 150 Use flanges ND 16.

### Welding neck flange EN 1092-1, PN 16



DN	A	B	C	D	E	AISI316L-1.4404	AISI316Ti-1.4571
50	165	18	45	60,3x2,9	4xM16x65	588436	Enquiry 585736
65	185	18	45	76,1x2,9	4xM16x65	588437	Enquiry 585737
80	200	20	50	88,9x3,2	8xM16x75	588438	Enquiry 585738
100	220	20	52	114,3x3,6	8xM16x75	588439	Enquiry 585739
125	250	22	55	139,7x4	8xM16x75	588441	Enquiry 585741
150	285	22	55	168,3x4,5	8xM20x80	588442	Enquiry 585742
200	340	24	62	219,1x5,9	12xM20x80	588444	Enquiry 585744
250	405	26	70	273x6,3	12xM24x90	588446	Enquiry 585746
300	460	28	78	323,9x7,1	12xM24x90	588448	Enquiry 585748

10 - 40 Use flanges ND 40.